

Nuclear Medicine Christchurch Hospital

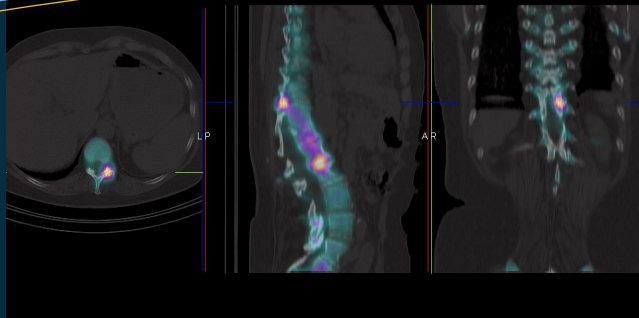
a service of the
Canterbury District Health Board

News in brief

- We welcome Dr. Will Howard, Radiologist and Nuclear Medicine Physician, to Christchurch Hospital.
- SPECT/CT imaging is now standard practice and a second system is on its way. This will mean earlier appointments and reduced additional examinations for patients.
- Thyroid scans - a look at some of the thyroid scans performed as part of the health pathway.
- Our bone scan and thyroid scan health pathways documents are now online:
cdhb.healthpathways.org.nz

Nuclear Medicine Department
Christchurch Hospital
Private Bag 4710
Christchurch 8140
Phone: 03 364 0890 (reception)
03 364 0867 (referrals)
Fax: 03 364 0869

www.cdhb.health.nz/nuclear-medicine



Thyroid scans

Welcome to Dr Will Howard

It is our pleasure to introduce to Dr William (Will) Howard from the UK who is both a Radiologist and Nuclear Medicine Physician working full time for the CDHB.

Will joins the medical team of Dr's Sue O'Malley and Bill Avery.



The CDHB is very fortunate in providing this level of SMO service in Nuclear Medicine, combining backgrounds in Radiology (Drs Bill Avery and Will Howard) and Cardiology (Dr Sue O'Malley).

Planning for a second SPECT/CT system

Our Department is in the process of acquiring a second SPECT/CT Gamma Camera system to provide the level of care that is standard. CT is now routine for many of the bone scans and all of the parathyroid and cardiac imaging. Below is the list of studies that often utilise CT for improved localisation and image quality:

- Bone imaging
- Sentinel node localisation, for selected

melanoma cases (i.e. head and neck)

- Gastro-intestinal blood loss scans

We are hopeful that work to install our new camera installation will commence in July 2016. This will mean earlier patient appointments and optimal scanning for all patients without the need to transfer patients between two different gamma cameras.

Thyroid scans

Radionuclide thyroid scans and thyroid therapy have been part of nuclear medicine since its beginning. **Thyroid scans** can be seen as one scan for all.... BUT THEY ARE NOT. Thyroid scans are broadly divided into radionuclide scans and ultrasound scans. [Health pathways](#) have been written by local SMO's for our population and they provide guidelines as to which scan is most appropriate for a patient. In short:

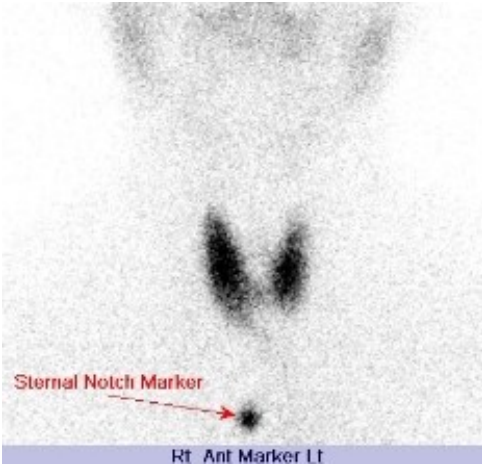
- **Thyroid Clinic requests go to Endocrinology, CDHB.**
- **Thyroid nodules – follow HealthPathways.org.nz**
- **Thyrotoxic patients (suppressed/low TSH) - refer to Nuclear Medicine for a radionuclide thyroid scan**

Canterbury
District Health Board
Te Poari Hauora o Waitaha

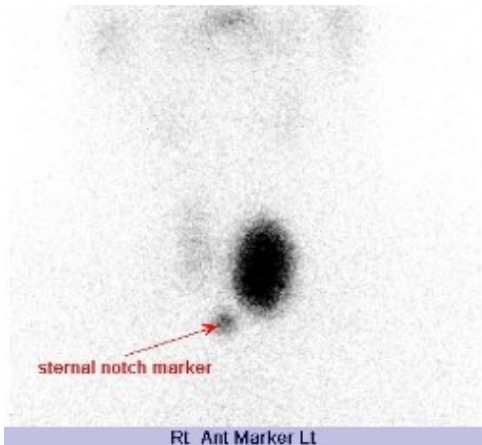
The following images are some examples of thyroid conditions scanned in our Department.

Thyroid Scans for Thyrotoxicosis

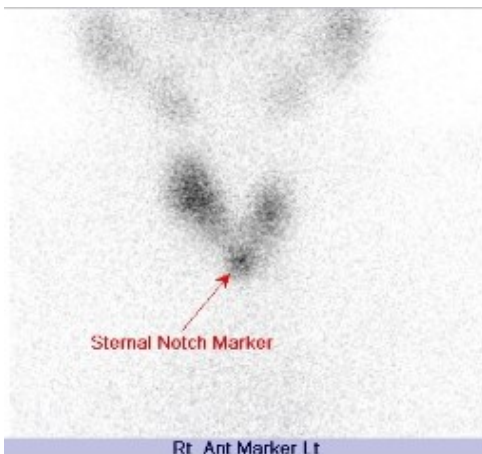
Grave's disease



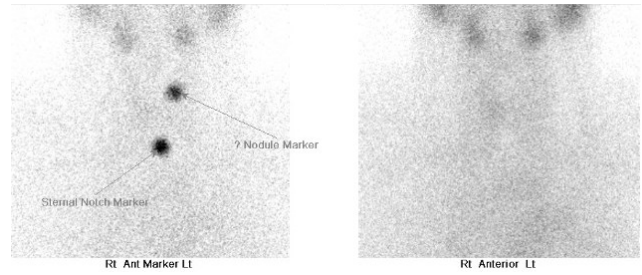
Toxic nodule



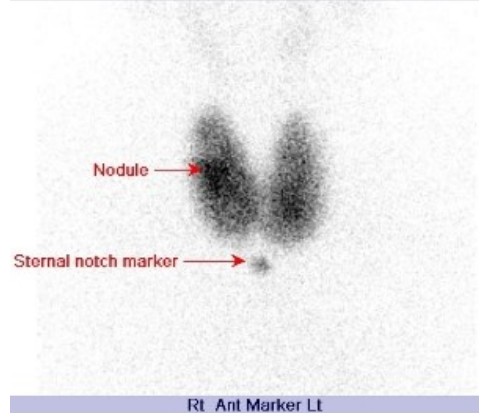
Toxic multi-nodular goitre



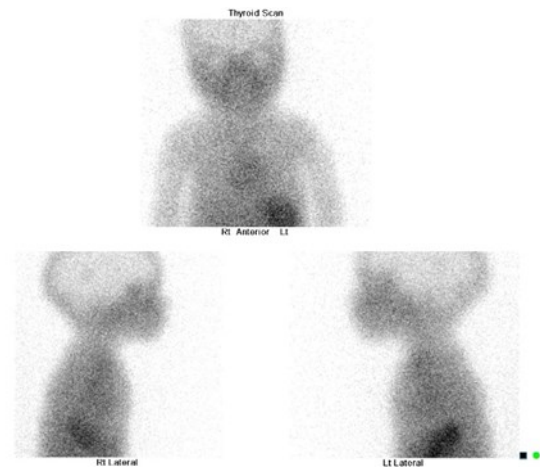
Thyroiditis



Grave's Disease on a background of multi-nodular goitre



Thyroid Agenesis



Sublingual Thyroid Gland

